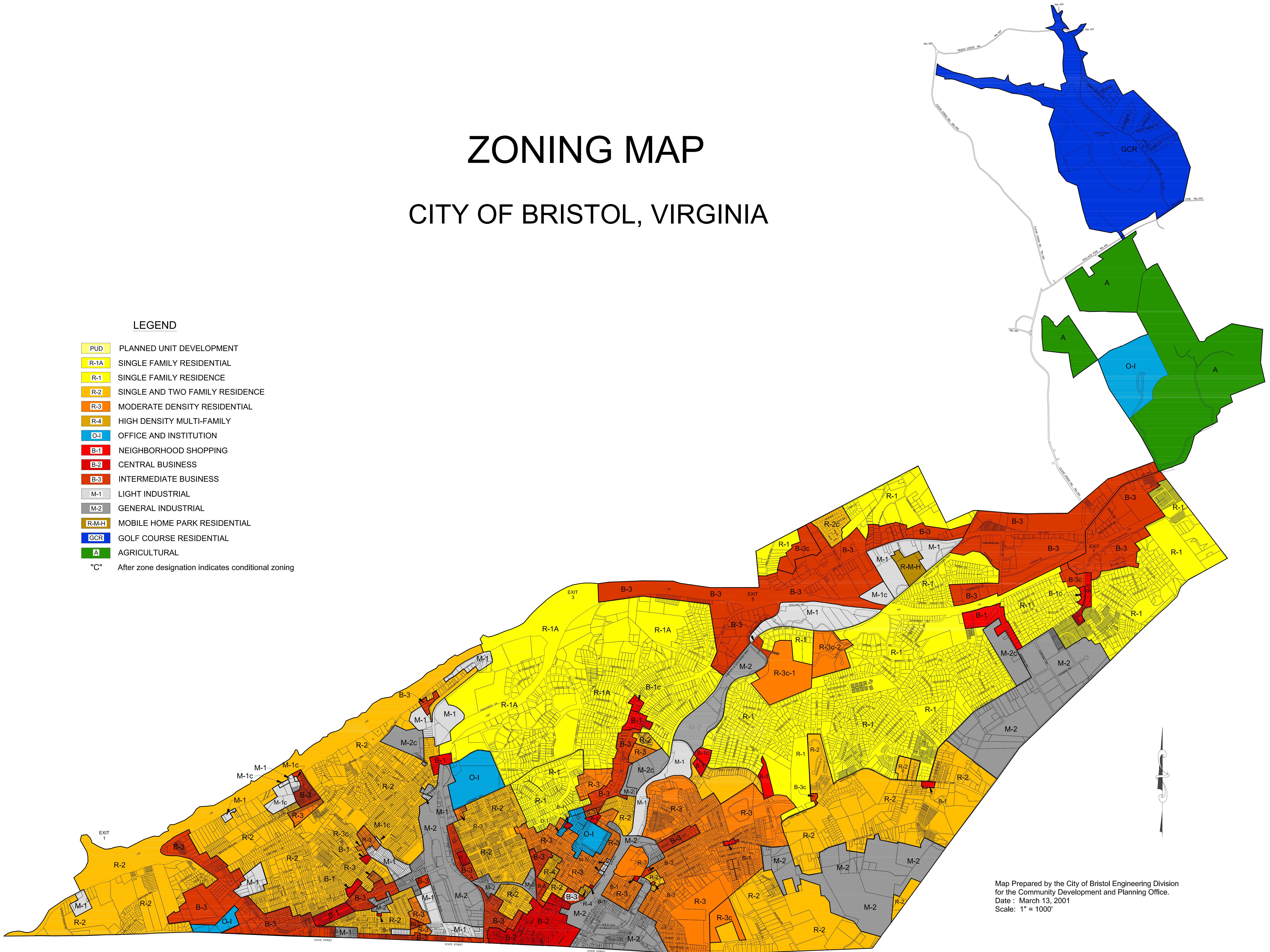


ZONING MAP

CITY OF BRISTOL, VIRGINIA

LEGEND

- PUD PLANNED UNIT DEVELOPMENT
 - R-1A SINGLE FAMILY RESIDENTIAL
 - R-1 SINGLE FAMILY RESIDENCE
 - R-2 SINGLE AND TWO FAMILY RESIDENCE
 - R-3 MODERATE DENSITY RESIDENTIAL
 - R-4 HIGH DENSITY MULTI-FAMILY
 - O-1 OFFICE AND INSTITUTION
 - B-1 NEIGHBORHOOD SHOPPING
 - B-2 CENTRAL BUSINESS
 - B-3 INTERMEDIATE BUSINESS
 - M-1 LIGHT INDUSTRIAL
 - M-2 GENERAL INDUSTRIAL
 - R-M-H MOBILE HOME PARK RESIDENTIAL
 - GCR GOLF COURSE RESIDENTIAL
 - A AGRICULTURAL
- "C" After zone designation indicates conditional zoning



Map Prepared by the City of Bristol Engineering Division
for the Community Development and Planning Office.
Date : March 13, 2001
Scale: 1" = 1000'